



VALMONT

presents

DIALOGUE

YVES LÉVÊQUE & *Collection d'Artistes*

Collection of Fondation Valmont with Isao,
Joan Gardy Artigas, Jane Le Besque, Didier Guillon,
Leonardo Cimolin & Bénédicte Blanc-Fontenille

CONTEMPORARY ART EXHIBITION CELEBRATING ANNIVERSARIES



PARIS - MADRID - BERLIN - MUNICH - VERBIER

AN EXHIBITION FOR TWO ANNIVERSARIES

Ten years after the creation of Fondation Valmont, the exhibition **DIALOGUE. A Return to Origins**, presented at the stores La Maison Valmont boutiques, invites visitors to discover the mission and activities of the Foundation.

DIALOGUE is above all a tribute to the artists belonging to the vibrant community on which the Foundation has built its reputation. **DIALOGUE** is a manifesto, that of *family* in both traditional and metaphorical senses, an ode to maintaining strong ties with those who move us through their talents and evoke memories of a bygone life.

Starting in Verbier in the Valais Alps, **DIALOGUE** is a touring exhibition akin to a theatrical performance, telling a precious story – a dialogue, indeed – between a great master of painting and international contemporary artists.

The connection between Fondation Valmont and *Yves Lévêque* dates back to the 1970s, when Didier Guillon's father, Claude Guillon, crossed paths with the painter. Captivated by the artist's mastery, with his broad brushstrokes of warm colours reminiscent of summer wheat fields, Claude Guillon became both a friend and a collector. The collection of Yves Lévêque's works is extensive, with his canvases adorning the walls of *Les Résidences Valmont* from Venice to Barcelona, as Didier Guillon followed in his father's footsteps. There are no geographical boundaries for this painter's works, just as there are none for the endless fields beyond Paris that stretched before his eyes.

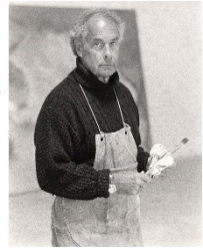
The birth of the Valmont Foundation was preceded by an unusual project : in 2014, a collector's challenge to assemble his own *Wunderkammer* and send it to prestigious locations such as London and Hong Kong. The *Collection d'Artistes*, a cabinet of curiosities, is a precious treasure chest, opened exclusively for VIP guests.

The year 2025 marks two important anniversaries : the 40th anniversary of Valmont and the 10th anniversary of Fondation Valmont – key milestones in a story rich with projects and friendships born under the banner of art.



YVES LÉVÊQUE

The 1960s led some artists towards abstraction, a non-figurative expressionism where the act of painting itself became the protagonist. Lévêque distanced himself from this trend. While he shared with his contemporaries the desire to give brushstrokes great amplitude and virtuosity, he preferred visions already dear to William Turner.



Le Pont Neuf, 1964

The paintings presented in this exhibition include *La Foule* (1962), *Le Drapeau* (1962), *Le Bosquet* (1963), *Le Pont Neuf* (1964), and *Le Hangar* (1966). Strong hues characterize these nearly fiery landscapes, where red merges with the green of the skies and endless meadows. A tumult of light, almost tangible, dense like the oil paint that frames it. These are paintings that are both contemporary and romantic, with landscapes of hypnotic and violent beauty, where nature is sublime, fascinating, and always unpredictable.

In addition to the five paintings mentioned above, *Le Tracteur Rouge* – exhibited at La Maison Valmont in Madrid – is a later work distinguished by a brighter colour palette, yet the subject remains the same : an tribute to the land.



Le Tracteur Rouge

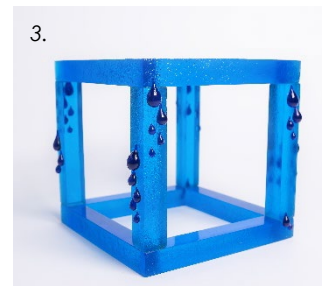
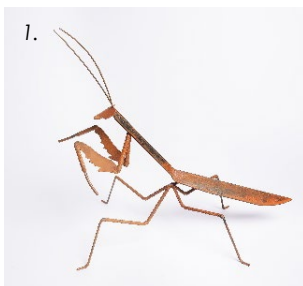
LA COLLECTION D'ARTISTES

About ten years ago, Didier Guillon had a dream : to organize a travelling exhibition bringing together the works of his favourite contemporary artists. A mix of drawings and sculptures in various materials travelled together for miles, thanks to Valmont, just a few months before the homonymous Foundation was officially created.

The *Collection d'Artistes* that Fondation Valmont presents in *DIALOGUE* is simply an artistic cabinet of curiosities without rhyme or reason – a straightforward association of expression, materials, and colours. The works featured are :

1. *La Mante*, Isao Llorens Ishikawa – 2. *Instant*, Bénédicte Blanc-Fontenille – 3. *Rain cage*, Didier Guillon – 4. *Venezia Crepa*, Leonardo Cimolin – 5. *Masculin Féminin*, Joan Gardy Artigas – 6. *Nu*, Didier Guillon - 7. *Joys of Nature*, Jane Le Besque

Collection d'Artistes





DIALOGUE WILL BE PRESENTED
AT THE FOLLOWING ADDRESSES :

La Maison Valmont **Verbier**

Rue de la Poste 16

From 15.11.2024 to 05.04.2025

La Maison Valmont **Paris**

6 rue de Castiglione

From 30.01.2025 to 20.04.2025

La Maison Valmont **Madrid**

C. de Jorge Juan, 13

From 30.01.2025 to 20.04.2025

La Maison Valmont **Berlin**

Fasanenstraße 72

From 30.05.2025 to 03.08.2025

La Maison Valmont **Munich**

Maximilianstraße 22

From 14.08.2025 to 02.11.2025

Director Fondation Valmont

Valentina Secco – valentina.secco@evalmont.com

www.fondationvalmont.com

www.lamaisonvalmont.com